



Jinan Weihua Machinery & Equipment Co., LTD

Website: www.weihualaser.com Email: info@jnweihua.com

Tel: +86-15853160596 Fax: +86-531-88199977

Large vision software calibration operation

First step Camera focus adjustment

As shown below (Remarks; AF/MF is built to focus ON/OFF for anti-shake)



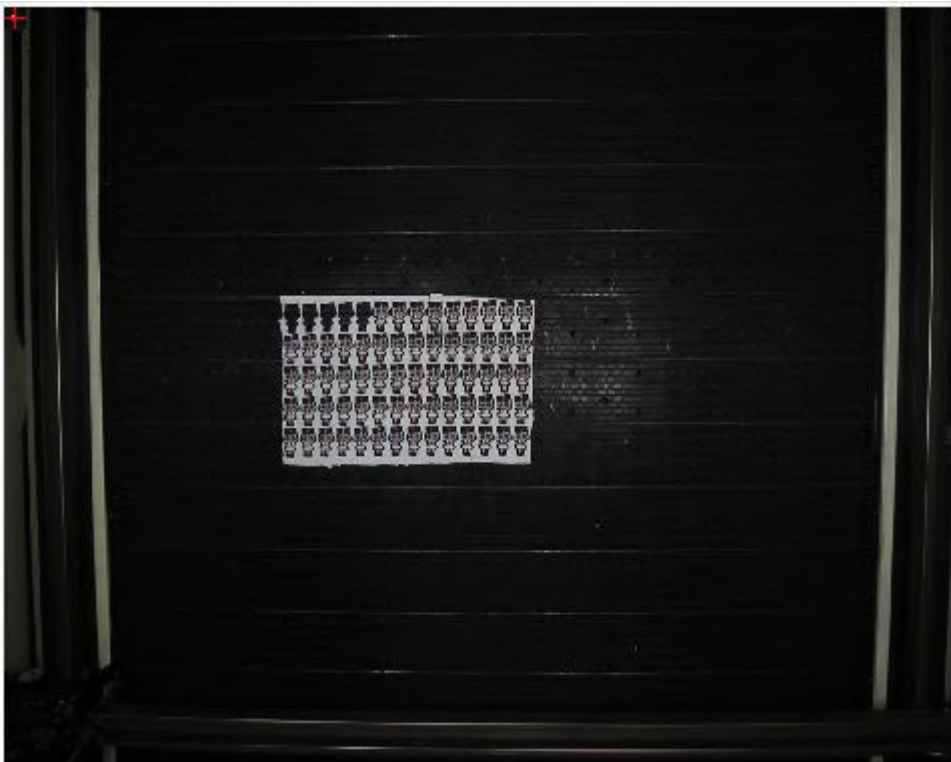


Jinan Weihua Machinery & Equipment Co., LTD

Website: www.weihualaser.com Email: info@jnweihua.com

Tel: +86-15853160596 Fax: +86-531-88199977

Adjust the two switches to AF and ON respectively and place a piece of colored material under the camera as shown below.



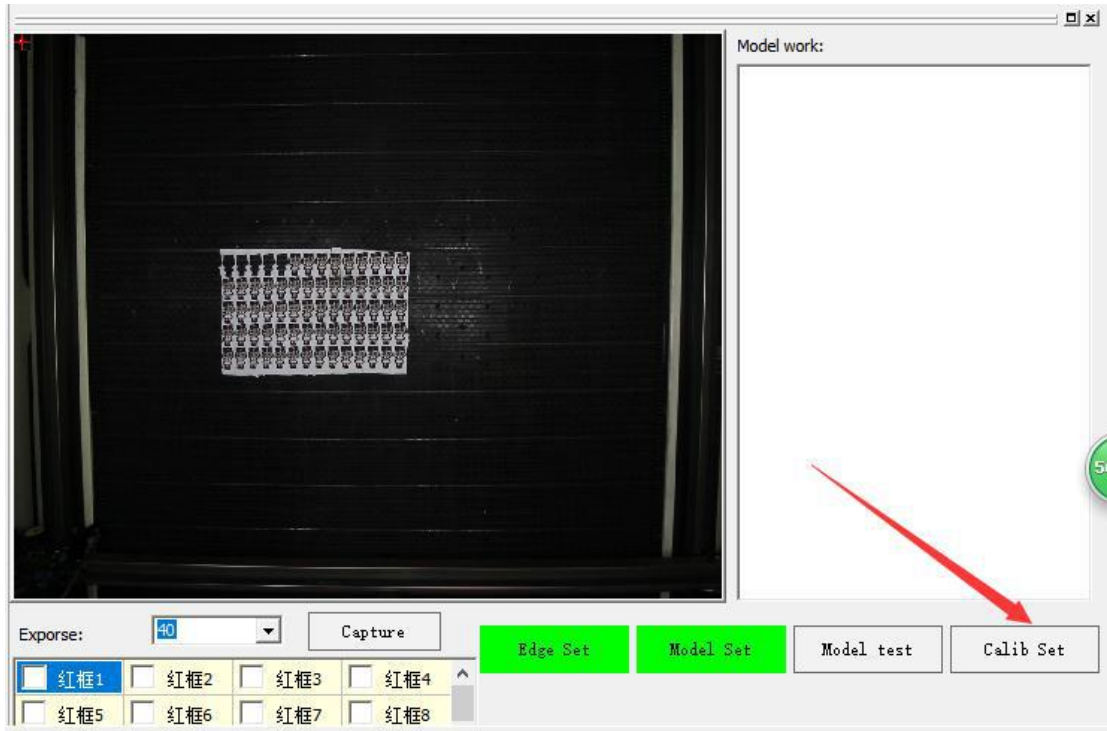
Click on punctuation management as shown below



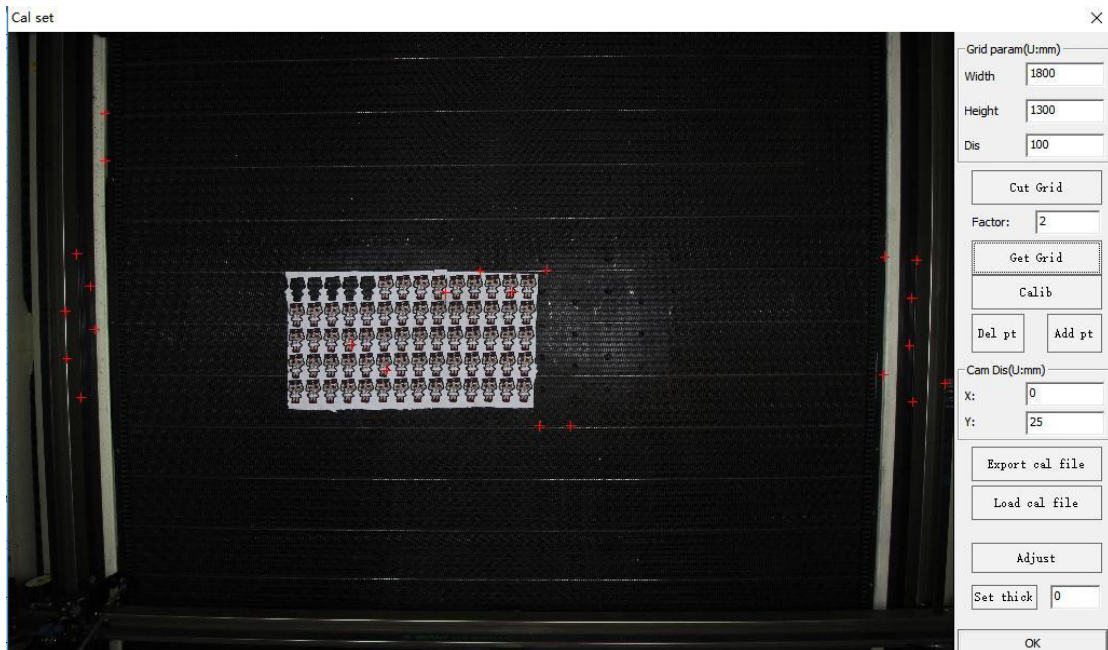
Jinan Weihua Machinery & Equipment Co., LTD

Website: www.weihualaser.com Email: info@jnweihua.com

Tel: +86-15853160596 Fax: +86-531-88199977



After entering the calibration management, click to get the grid point. At this time, the camera will take the photo as shown below (Remarks; click to get the grid point to take the photo. There is no calibration file in the software or the calibration file can not be used. If there is a calibration file, just refocusing is directly



We observe whether the graphics in the photos are clear. If it is not clear, we can click on the grid and then the camera will take a photo again until the graphics are clear. When the graphics are

clear, as shown below



We will set up the AF/MF to the MF seat.

Second step

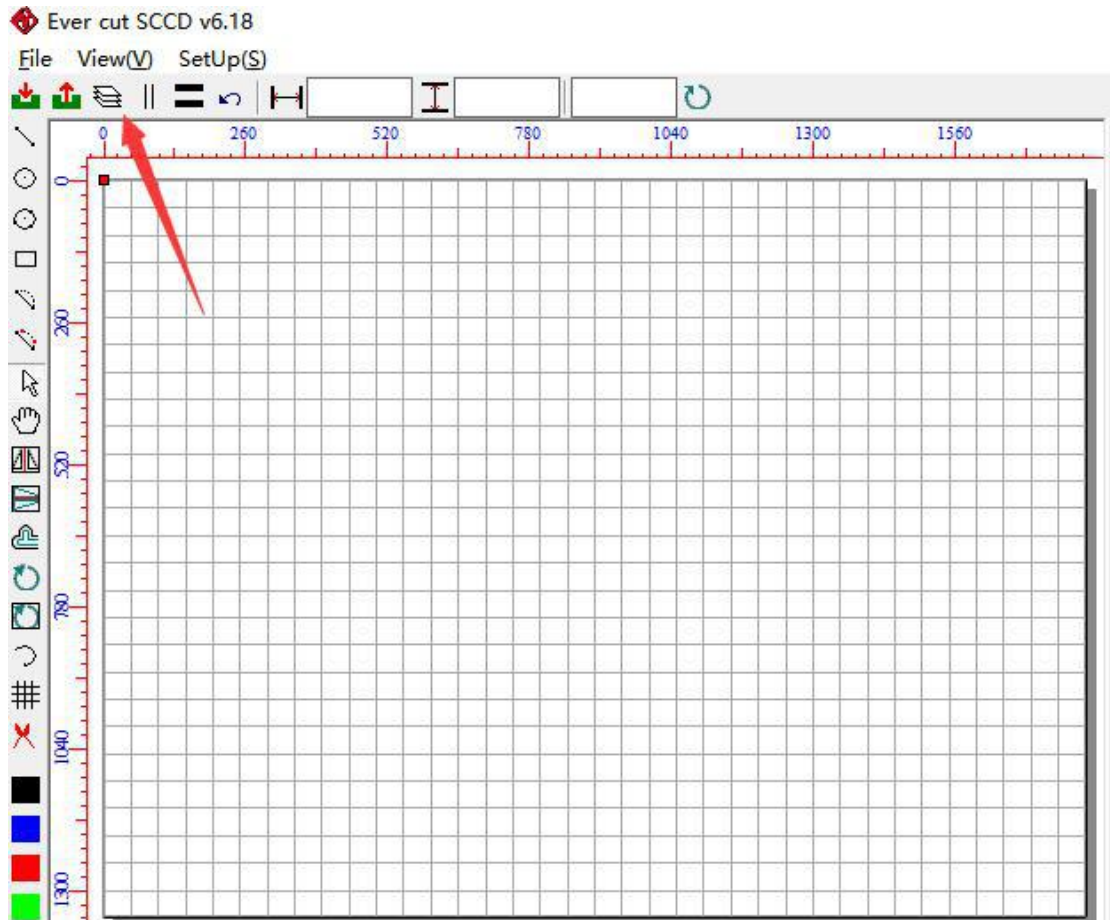
Open the Ever cutting SCCD software and click on the parameter settings as shown below.



Jinan Weihua Machinery & Equipment Co., LTD

Website: www.weihualaser.com Email: info@jnweihua.com

Tel: +86-15853160596 Fax: +86-531-88199977



Then click on the query system to automatically read the machine format and then

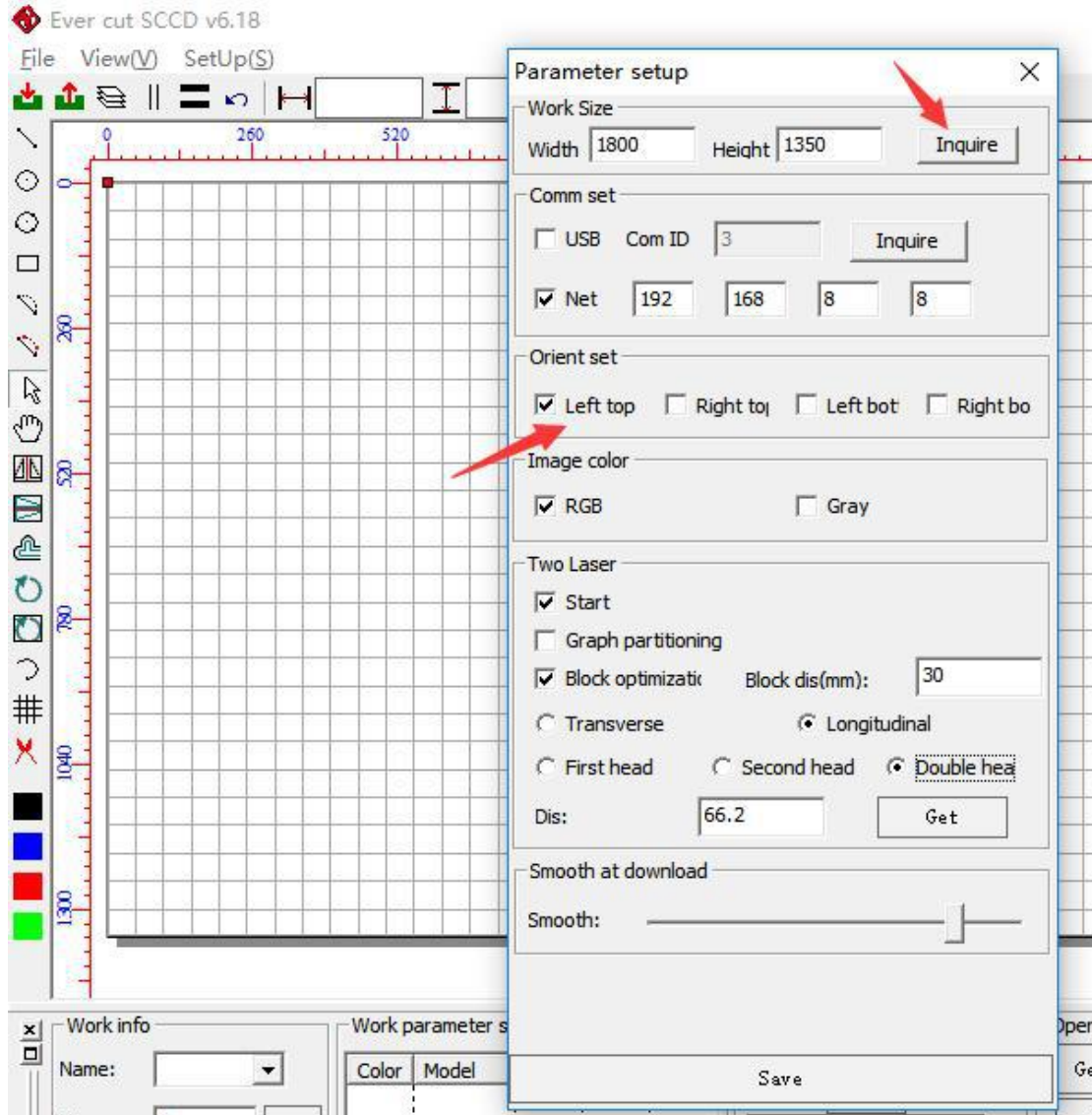


Jinan Weihua Machinery & Equipment Co., LTD

Website: www.weihualaser.com Email: info@jnweihua.com

Tel: +86-15853160596 Fax: +86-531-88199977

set the machine origin as shown below





Jinan Weihua Machinery & Equipment Co., LTD

Website: www.weihualaser.com Email: info@jnweihua.com

Tel: +86-15853160596 Fax: +86-531-88199977

After setting, put a piece of white paper under the camera (the size of the white paper is slightly larger than the size of the punctuation, do not move the paper when the entire calibration process is completed) as shown below





Jinan Weihua Machinery & Equipment Co., LTD

Website: www.weihualaser.com Email: info@jnweihua.com

Tel: +86-15853160596 Fax: +86-531-88199977

Then click the calibration management settings to set the calibration range (remarks; the spacing should be 50 or 100, so the calibration range should be a multiple of 50 or 100) as shown below

Grid param(U:mm)

Width

Height

Dis

Cut Grid

Factor:

Get Grid

Calib

Del pt

Add pt

Cam Dis(U:mm)

X:

Y:

Export cal file

Load cal file

Adjust

Set thick

OK

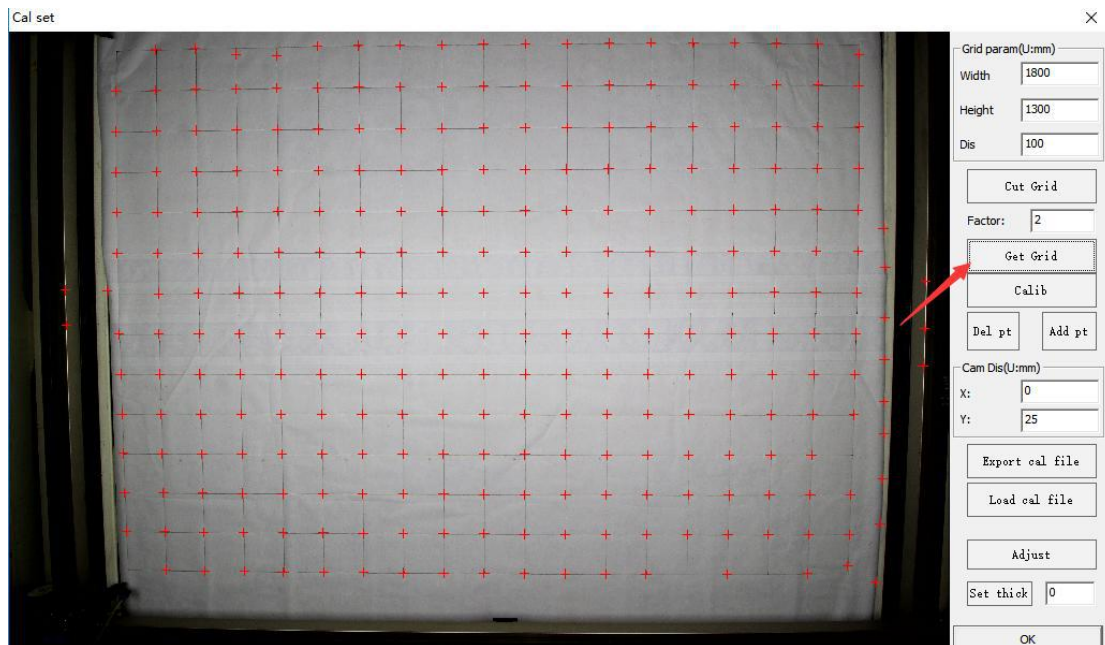


Jinan Weihua Machinery & Equipment Co., LTD

Website: www.weihualaser.com Email: info@jnweihua.com

Tel: +86-15853160596 Fax: +86-531-88199977

After finishing the grid line, click to get the grid point as shown below.



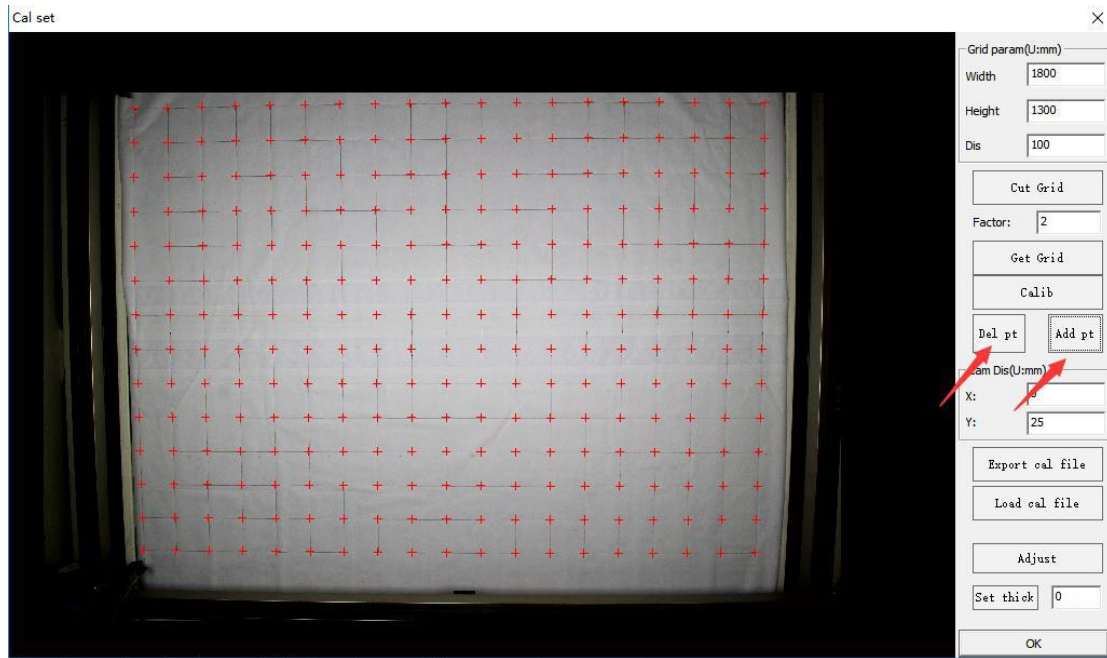
As shown in the above figure, there are extra cross points and points that are not at the intersection of the cut lines. Click on the delete point frame to select the extra cross points to delete. In the figure, the intersection of the cut lines has no cross points. Click on the acquisition point to move the mouse to the intersection of the cut lines. Double click the mouse.



Jinan Weihua Machinery & Equipment Co., LTD

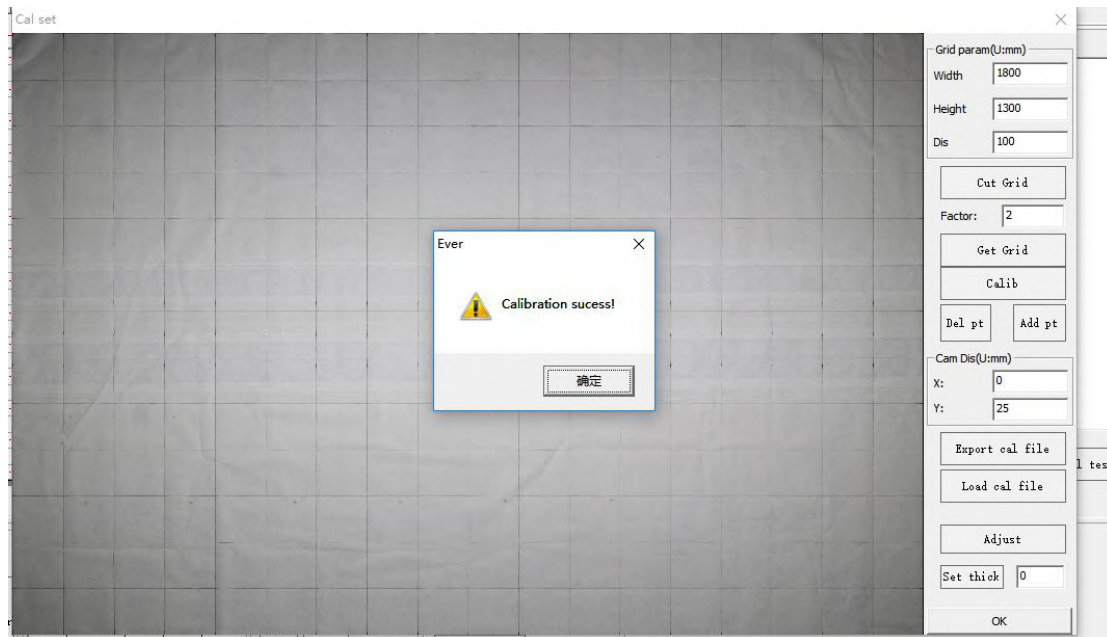
Website: www.weihualaser.com Email: info@jnweihua.com

Tel: +86-15853160596 Fax: +86-531-88199977



Delete point Click on the calibration after adding the point

Please restart the software after the calibration is completed.



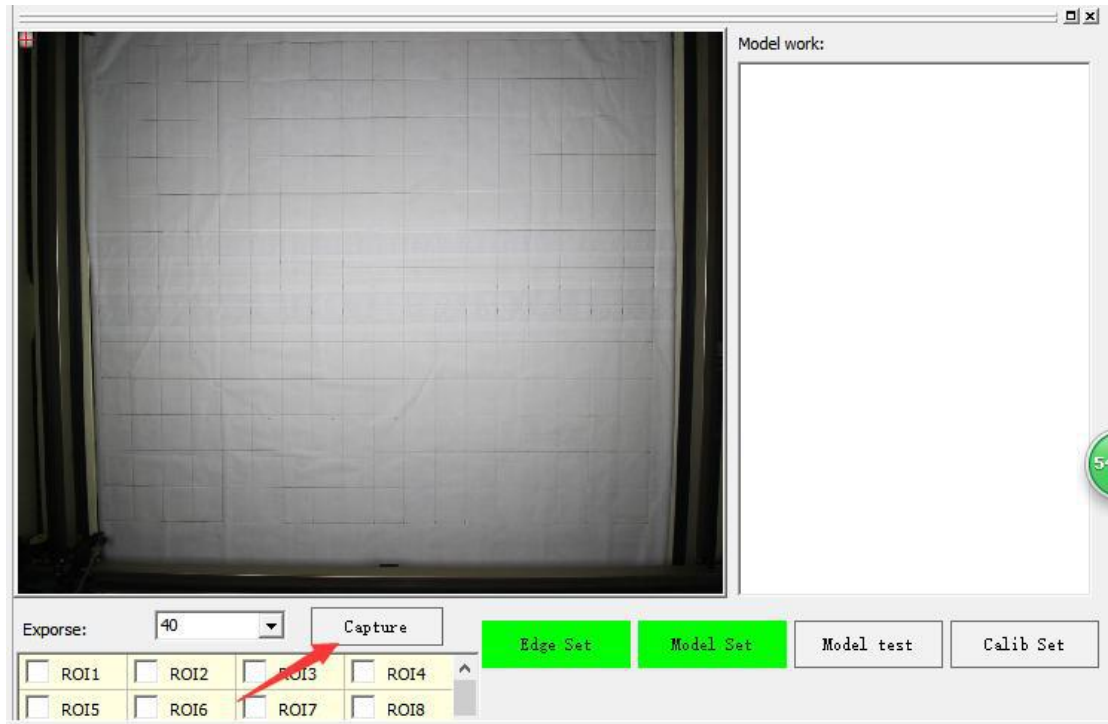
Click to take a photo after restarting the software



Jinan Weihua Machinery & Equipment Co., LTD

Website: www.weihualaser.com Email: info@jnweihua.com

Tel: +86-15853160596 Fax: +86-531-88199977



Re-photographed in the picture, draw nine circles or squares, click on the common cut as shown below.



Jinan Weihua Machinery & Equipment Co., LTD

Website: www.weihualaser.com Email: info@jnweihua.com

Tel: +86-15853160596 Fax: +86-531-88199977

Ever cut SCCD v6.18

File View(V) SetUp(S)

299.605 299.605

-330 0 330 660 990 1320 1650

0 330 660 990 1320

Expore: 40 Capture

ROI1 ROI2 ROI3 ROI4
ROI5 ROI6 ROI7 ROI8

Work info
Name: []
Num: 0
Time: 0
All count: 0

Work parameter set
Color Model Sp... En... O...

Axis move
U- Up Accu
Left Right
U+ Down

Operator
General Cut Stop
Label Cut
Edge Cut Label out sim
Label and edge

就绪 Card link succee Camera link succee Object number :0 Circumference :0.000 Width

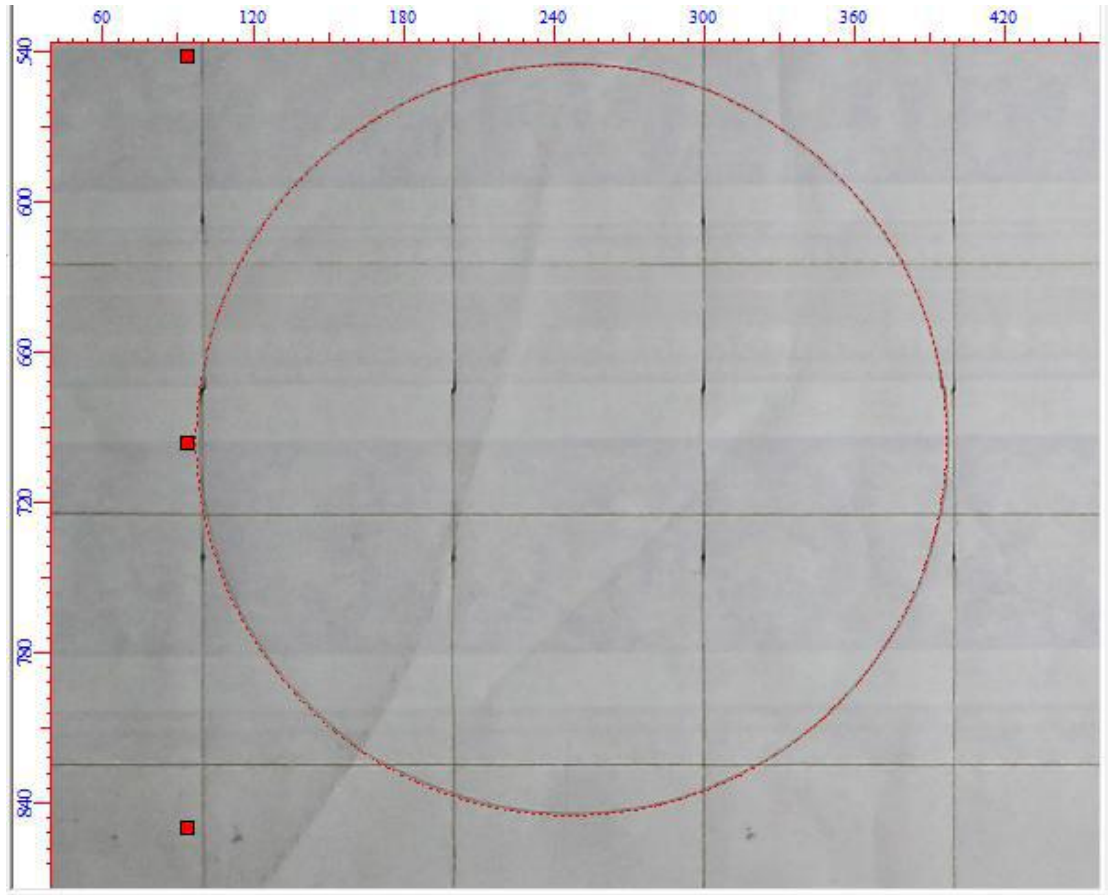


Jinan Weihua Machinery & Equipment Co., LTD

Website: www.weihualaser.com Email: info@jnweihua.com

Tel: +86-15853160596 Fax: +86-531-88199977

After the cutting is completed, click on the photo to zoom out the picture taken to see if the cutting line and the circle drawn can overlap.



When the cutting line cannot overlap with the figure, please re-calibrate according to the above steps. When the cutting line can coincide with the figure, the paper can be removed after the calibration is successful.



Jinan Weihua Machinery & Equipment Co., LTD

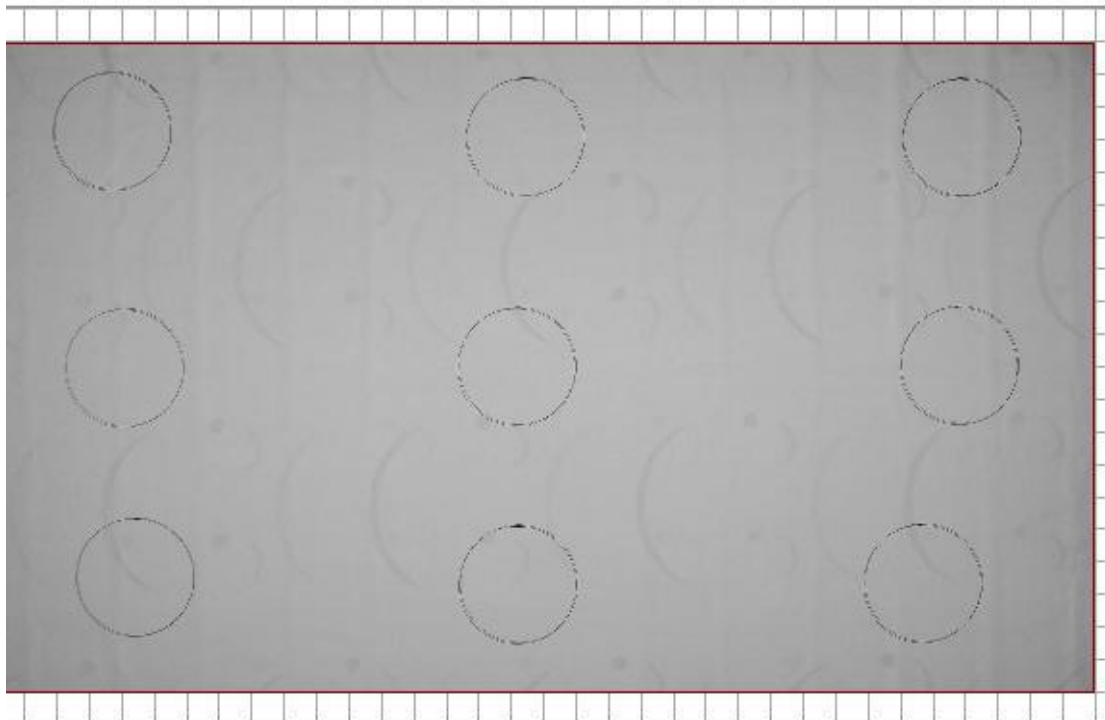
Website: www.weihualaser.com Email: info@jnweihua.com

Tel: +86-15853160596 Fax: +86-531-88199977

When there is a deviation when cutting the graph after the calibration is completed and all are correct, we can fine-tune to solve the deviation problem during the graphics cutting.

First, there are two cases when the pattern is cut by the deviation.

The overall situation of the first case is shown in the figure below.



The cutting lines and graphics in the figure are offset and not completely reattached to the graphics. At this point, we click on the calibration management to enter the calibration management interface to adjust the value of X Y in the distance.



Jinan Weihua Machinery & Equipment Co., LTD

Website: www.weihualaser.com Email: info@jnweihua.com

Tel: +86-15853160596 Fax: +86-531-88199977

Grid param(U:mm)

Width: 1800

Height: 1300

Dis: 100

Cut Grid

Factor: 2

Get Grid

Calib

Del pt Add pt

Cam Dis(U:mm)

X: 0

Y: 25

Export cal file

Load cal file

Adjust

Set thick 0

OK

The overall deviation of the graph is adjusted to correct the distance.(Remarks; when adjusting the value, we first add the value of X Y and then cut the graph. If the error value becomes larger, we subtract the value of X Y until the cutting line graph is consistent)

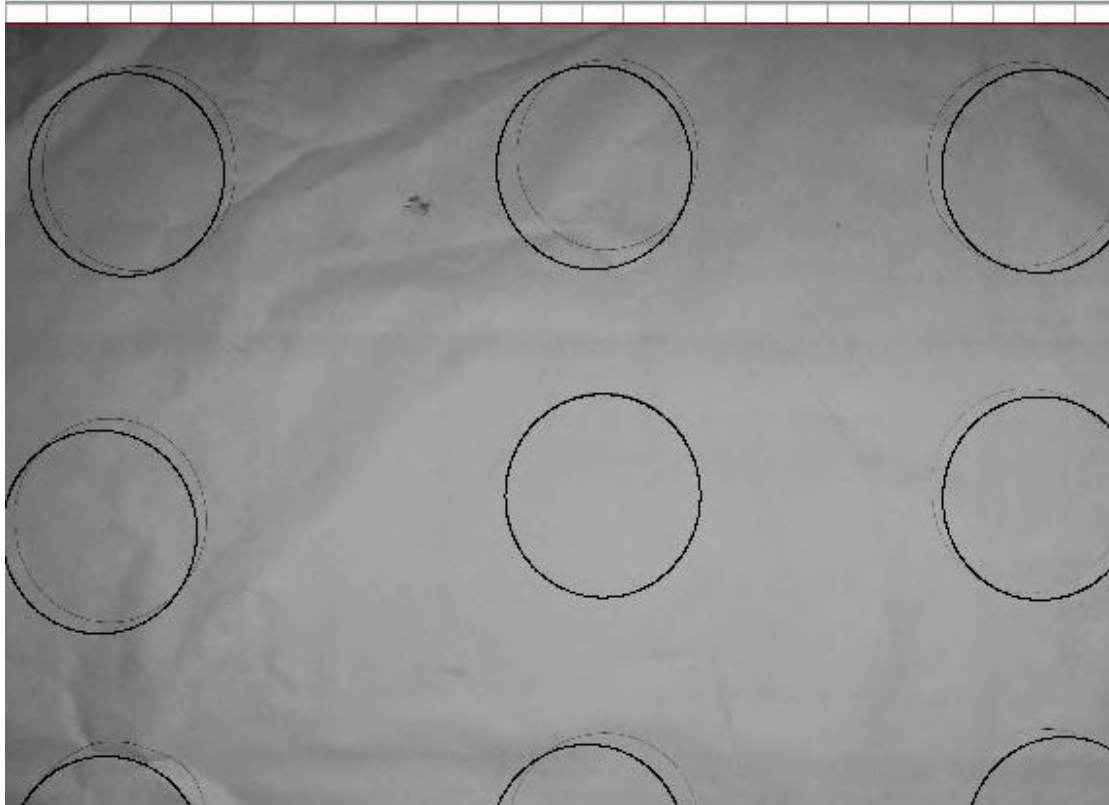


Jinan Weihua Machinery & Equipment Co., LTD

Website: www.weihualaser.com Email: info@jnweihua.com

Tel: +86-15853160596 Fax: +86-531-88199977

In the second case, there is no deviation in the middle of the graph, but there are deviations around it as shown in the figure below.



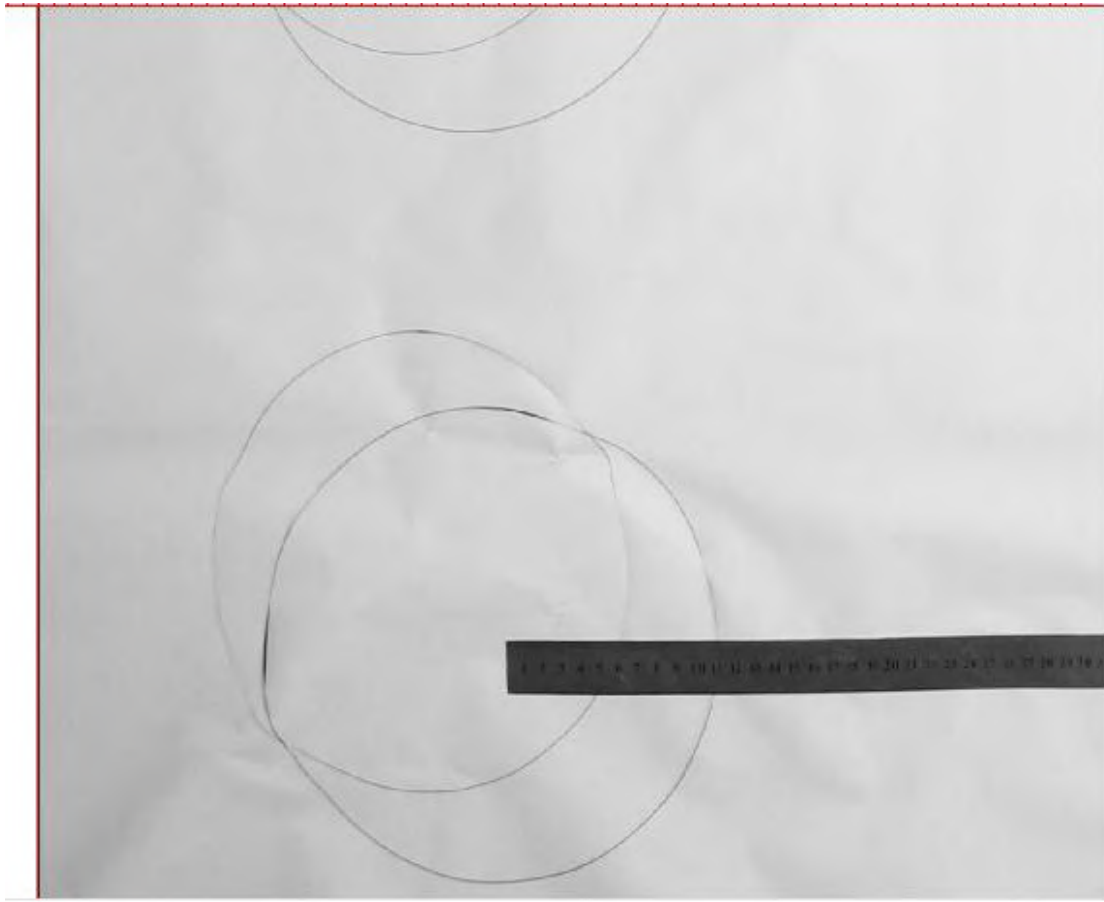


Jinan Weihua Machinery & Equipment Co., LTD

Website: www.weihualaser.com Email: info@jnweihua.com

Tel: +86-15853160596 Fax: +86-531-88199977

Use a piece of iron ruler to measure the deviation distance as shown below



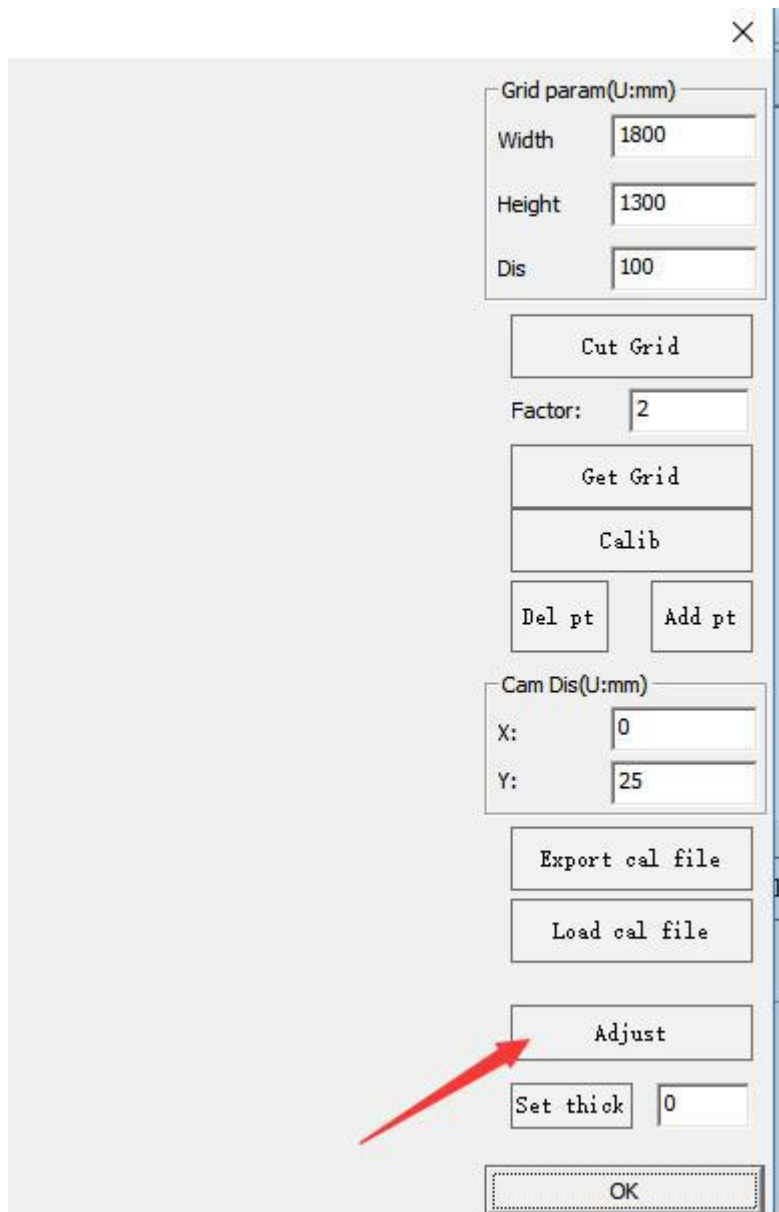


Jinan Weihua Machinery & Equipment Co., LTD

Website: www.weihualaser.com Email: info@jnweihua.com

Tel: +86-15853160596 Fax: +86-531-88199977

Then click the calibration management to enter the management interface, click the correction as shown below





Jinan Weihua Machinery & Equipment Co., LTD

Website: www.weihualaser.com Email: info@jnweihua.com

Tel: +86-15853160596 Fax: +86-531-88199977

Enter the calibration interface as shown below

Width: 4069
Height: 2939

When there is a deviation in that position and adjust the value of XY of that position (Remarks; XY value adjustment first unified first and then cut the graph to see if the deviation is increased or decreased, if the increase indicates that the adjustment is reversed then adjust again)We get as shown below



Jinan Weihua Machinery & Equipment Co., LTD

Website: www.weihualaser.com Email: info@jnweihua.com

Tel: +86-15853160596 Fax: +86-531-88199977

